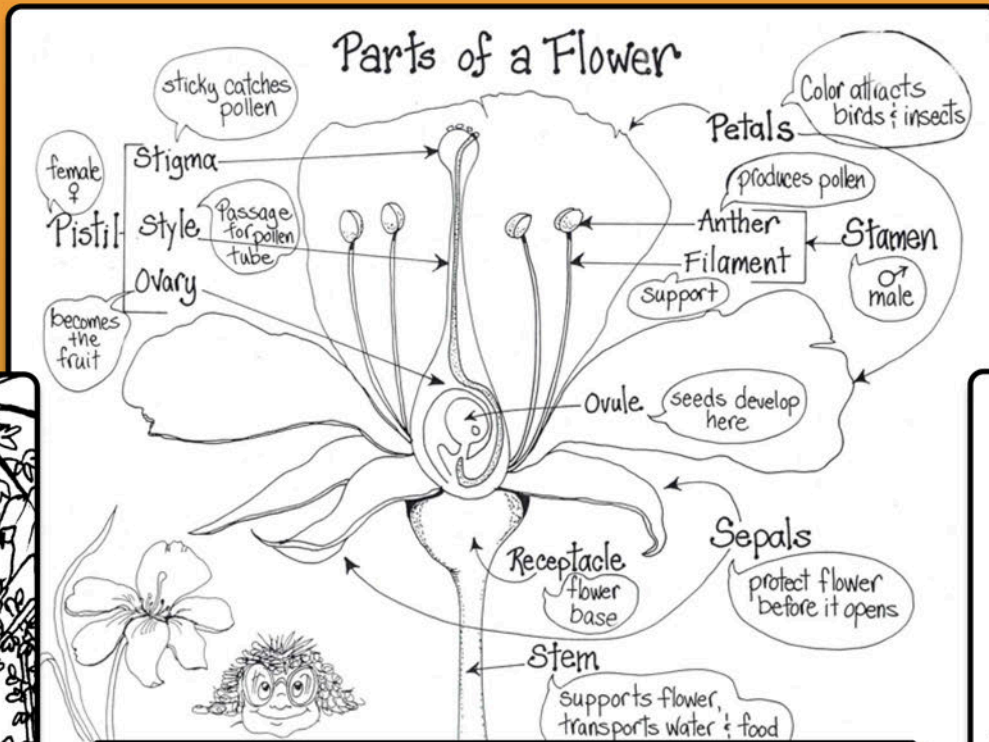


# Pollination



MALE & FEMALE PLANTS

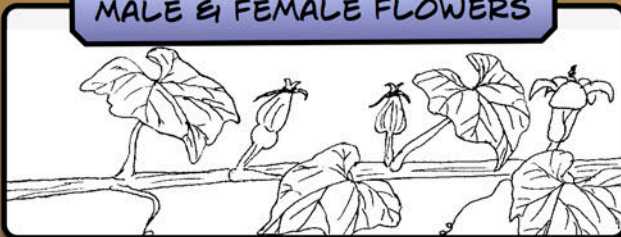


SELF POLLINATING FLOWERS

FLOWERS WITH FEMALE & MALE PARTS

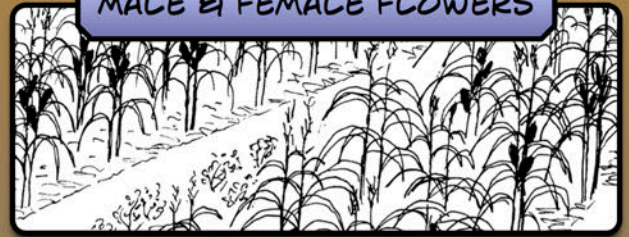
Different plants have different methods of pollination

MALE & FEMALE FLOWERS



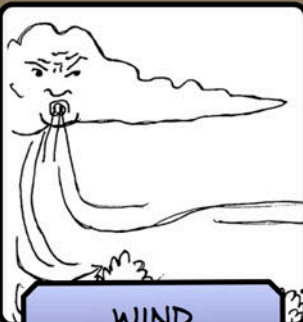
HINT: HUMAN CAN POLLINATE FLOWERS WHEN NOT ENOUGH INSECTS ARE PRESENT OR WHEN SPECIFIC RESULTS ARE DESIRED

MALE & FEMALE FLOWERS



HINT: PLANT CORN IN BLOCKS TO MAXIMISE POLLINATION RATES AND THEREFORE HOW MUCH CORN YOU PRODUCE

## Pollinators



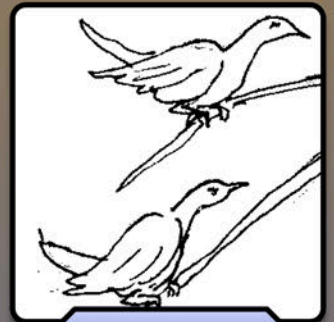
WIND POLLINATION



HUMANS



BEEES, ANTS & INSECTS



BIRDS



# Seed Saving



# Cycle

**GROW HEALTHY PLANTS**  
- HEALTHY PLANTS MAKE HEALTHY SEEDS

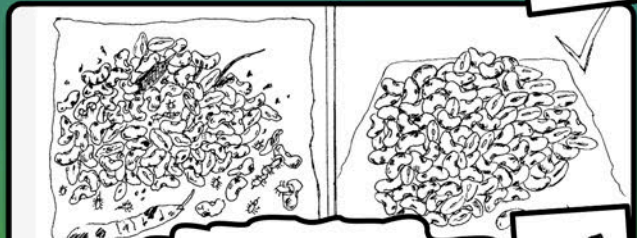


**PICK THE BEST PLANTS FOR SEED**  
- TO IMPROVE THE QUALITY OF YOUR SEED



**PICK SEEDS AT THE RIGHT TIME**  
- TO IMPROVE GERMINATION RATE

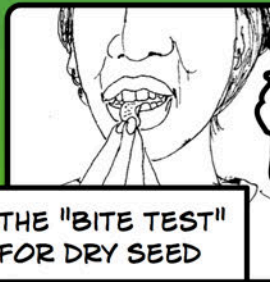
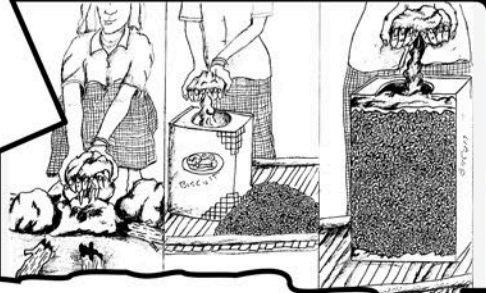
**SHARE AND GROW LOCAL SEED**  
- TO IMPROVE AND DIVERSIFY PRODUCTION



**CLEAN SEEDS**  
- TO PREVENT PEST AND FUNGUS PROBLEMS



**GOOD SEED STORAGE**  
- TO ENSURE YOUR SEEDS LAST A LONG TIME



**DRY SEEDS**  
- TO STOP SEEDS GOING MOULDY

**THE "BITE TEST" FOR DRY SEED**